

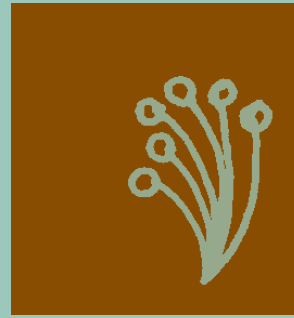
# Annual Report 2005



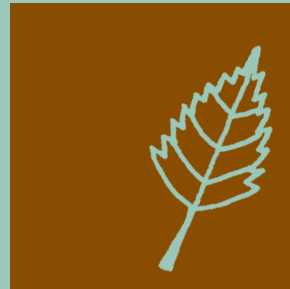
Mid-Iowa Health Foundation

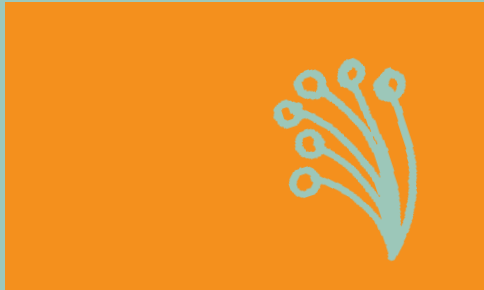






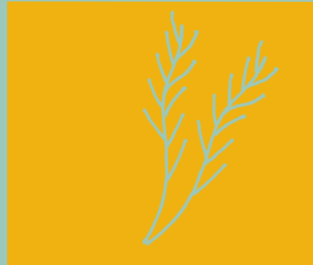
**MID-IOWA HEALTH FOUNDATION HAS A VISION  
FOR GREATER DES MOINES TO BE A HEALTHY COMMUNITY.**





**ENDOWED BY PROCEEDS OF THE SALE OF NORTHWEST COMMUNITY HOSPITAL IN 1984, MID-IOWA HEALTH FOUNDATION DEDICATES RESOURCES TO IMPROVING HEALTH IN GREATER DES MOINES.**

**THE FOUNDATION'S MISSION IS TO SERVE AS A PARTNER AND CATALYST FOR IMPROVING THE HEALTH OF VULNERABLE PEOPLE IN GREATER DES MOINES.**



IN EVERY  
SEASON...



Now entering its twenty-second year, Mid-Iowa Health Foundation continues its active commitment to improving the health of our greater Des Moines community. Alongside our dedicated partners, we initiate and support a wide range of health programs and services. We plant seeds of innovation, we nurture the saplings, and we help sustain those already mature and thriving.

On behalf of Mid-Iowa Health Foundation, we are pleased to provide you with this copy of our 2005 Annual Report, highlighting grants we awarded from January through December 2005 (FY2005) and saluting the efforts of our funded partners.

Together we have a proud record of cultivating a stronger and therefore healthier community, and together we will continue to realize our mission.

Kathryn Bradley  
President

Ivan Johnson  
Chair, Board of Directors



**MID-IOWA HEALTH FOUNDATION INVESTS RESOURCES FOCUSING ON IMPROVING ACCESS TO PRIMARY AND PREVENTIVE HEALTHCARE SERVICES, AND PROMOTING CHILDHOOD HEALTH.**

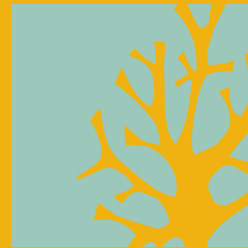
Through our **Community Response** Grants we learn from nonprofit organizations and programs about the important work needed to improve health and health care for individuals and families. The Foundation staff and Grant Committee review applications and make recommendations for board consideration and funding decisions.

The **Health Initiatives** Grant Program guides significant investments in projects or activities that address community health priorities. With input from a variety of sources, the Foundation identifies specific health needs, and then partners with selected community groups and organizations to cultivate solutions. Health Initiative proposals are accepted by invitation only.

Applications for Mid-Iowa Health Foundation grants may be downloaded from our website. Application deadlines are April 1 and October 1.

[www.midiowahealth.org](http://www.midiowahealth.org)  
[info@midiowahealth.org](mailto:info@midiowahealth.org)

# HEALTH INITIATIVES



**DURING 2005, MID-IOWA HEALTH FOUNDATION INVESTED A TOTAL OF \$275,500 TO HELP FUND THE FOLLOWING SEVEN HEALTH INITIATIVES:**



## **CHILD AND FAMILY POLICY CENTER • \$18,000**

Enhancing Comprehensive Developmental Health Services to Children is designed to produce changes in practice and policy within the pediatric practitioner community and to increase effective referrals to community-based providers of developmental services. Through action research, different tools and practices will be tested and modified for expansion within Polk County and the state.

## **DALLAS COUNTY HOSPITAL • \$33,000**

Dallas County Healthcare Access Collaborative will conduct a countywide needs assessment. The primary goal of this project is to identify the health needs of the Dallas County communities and determine long term strategies for healthcare access in this socio-economic and geographic diverse county.

## **DES MOINES INDEPENDENT COMMUNITY SCHOOL DISTRICT • \$20,000**

The School Health Advisory Council's focus is on achieving positive student health outcomes through community collaboratives. This grant expands upon the assessment phase and supports establishment of a neighborhood wellness center located in a middle school.

## **EMPLOYEE AND FAMILY RESOURCES • \$42,000**

Central Iowa Exploring Change Program is a second-stage, local innovation designed to provide timely access to, and meaningful engagement in, the most appropriate level of care for those diagnosed with substance abuse disorder. The program addresses the readiness for change of individuals with substance abuse disorder.

## **IOWA HEALTH FOUNDATION • \$50,000**

Neighborhood Health Initiative - Outreach Project addresses access and disparity issues by linking underserved and vulnerable residents with health care service providers, conducting health education activities, enrolling residents in health insurance programs, and networking with social services agencies and community resources in making referrals. Project staff reflects those they serve racially, culturally and in life experiences.

## **PRIMARY HEALTH CARE, INC. • \$55,000**

Community Access Pharmacy is a not-for-profit pharmacy designed to serve patients without prescription drug coverage. Drugs are provided through deeply discounted 340B purchasing program and directly through drug companies' Patient Assistance Programs for eligible patients. Modest filling fees are charged to the patients to partially offset costs of processing PAP applications and dispensing.

## **VISITING NURSE SERVICES • \$57,500**

The Child Care Nurse Consultant, a full-time registered nurse, supports health and safety quality improvement in child care. Initial assessment of child care environments, practices and policies is provided, with training, education, resources and technical assistance offered to address identified health and safety needs. This grant will identify and address developmental and special health needs of children.



# COMMUNITY RESPONSE

**IN 2005, MID-IOWA HEALTH FOUNDATION INVESTED A TOTAL OF \$415,910 IN COMMUNITY RESPONSE GRANTS TO 28 NONPROFIT ORGANIZATIONS ADDRESSING HEALTH NEEDS.**

**AID GREATER DES MOINES, INC. • \$12,000** Prevents underserved people from becoming infected or transmitting HIV through outreach, counseling, rapid testing, and referral services.

**AMERICAN HEART ASSOCIATION • \$10,000** Search Your Heart deploys screenings and risk factor reduction activities to African Americans and Latinos who disproportionately suffer and die of cardiovascular disease and stroke.

**AMERICAN RED CROSS • \$10,000** Hurricane Katrina relief efforts.

**BERNIE LORENZ RECOVERY CENTER • \$7,000** Provides tools for clients to remain free from addiction, improve physical and mental health, and develop life skills vital to self-sufficiency and living successfully in long-term recovery.

**BROADLAWNS MEDICAL CENTER FOUNDATION • \$15,000** The Breastfeeding Peer Counseling Project matches a mother-to-be with a peer counselor to provide support for breastfeeding initiation and duration.

**CATHOLIC CHARITIES • \$25,000** Hispanic Community Outreach provides affordable, high-quality, culturally competent counseling services to vulnerable Hispanic immigrant residents of Polk and Dallas counties.

**CHILDREN AND FAMILIES OF IOWA • \$20,000** Therapeutic Child-care serves emotionally disturbed children with acute behavior disorders with childcare, education, mental health, family support, and community services.

Family Violence Center Minority Outreach Advocate provides domestic violence services for clients with language barriers.

**CHILDREN AND FAMILY URBAN MINISTRIES • \$4,400** Back-to-School Fair offers free school physicals, eye and dental examinations, lead screenings, school supplies, immunizations, medical screenings, and health/social service information to families living in poverty.

**DES MOINES HEALTH CENTER • \$30,000** School Smiles delivers oral health education, screening, fluoride varnish, dental sealants, and onsite dental treatment to children in schools with high proportions of low-income families.





---

**DES MOINES PASTORAL COUNSELING CENTER • \$15,000** Mental health counseling for low-income adults, adolescents and children with a wide range of presenting concerns related to excessive stress, anxiety, depression, abuse, violence, or grief and loss issues.

**HAWTHORN HILL NEW DIRECTIONS SHELTER • \$8,500** Education, preventive services, emergency health supplies, medication, and referral information increases immediate access to health care for this vulnerable population.

**THE HOMESTEAD • \$24,500** One-on-one Applied Behavioral Analysis instruction for students with autism who need additional supports to be successful in their current learning environment.

**HOSPICE OF CENTRAL IOWA • \$10,000** Patient Financial Assistance for end-of-life care to anyone in need, regardless of their ability to pay.

**IOWA HOMELESS YOUTH CENTERS • \$7,000** WRAP (Women Rising Above Poverty) provides case management, support groups, life skill training, and refers young homeless women to health care.

**LUTHERAN SERVICES IN IOWA • \$30,000** HOPES offers pregnant women and new parents intensive home visitation to promote optimal development and link families with community resources in order to prevent infant mortality and foster a healthy home environment.

Refugee Health Outreach provides intensive personal counseling, medical care and peer role models to HIV positive refugee participants, and develops healthy action plans to reduce risk of HIV and other STD transmission.

**MENTOR IOWA • \$5,000** One-on-One Program recruits, screens, trains and matches volunteer mentors with abused, neglected, and delinquent children.

**MERCY HOSPITAL MEDICAL FOUNDATION • \$5,000** Trim Kids works to manage and prevent youth obesity with a 12-week program for children ages 9-18. Families learn to make healthy food choices, initiate and maintain regular physical activity, and foster a healthy body image.



---

**PLANNED PARENTHOOD  
OF GREATER IOWA •**

**\$20,000** LGBT (lesbian, gay, bisexual, and transgender) Health Initiative increases this population's access to health care by improving clinical skills and cultural competency of providers, increasing awareness of health risks and needs, and health outreach efforts.

**POLK COUNTY EXTENSION •**

**\$20,000** Get Physical! addresses the need for increased physical activity in youth and an orientation toward total wellness through a multi-faceted approach in targeted school districts.

**POLK COUNTY VICTIM SERVICES**

• **\$45,000** The Sexual Assault Response Team implemented use of standardized protocol and equipment with any person presenting following sexual assault so exams are performed in a timely, compassionate, consistent and accurate way in any of four Polk County emergency departments.

**SHALOM ZONE MINISTRIES • \$18,740**

Project focuses on reducing minority health disparities through targeted adult health screenings, educational materials, children's programs and activities, and a Back to School Health Fair.

**YOUNG WOMEN'S RESOURCE**

**CENTER • \$15,000** The Young Moms program provides parenting education and support to pregnant and parenting teens ages 13-21 and their children birth to age 5.

**YOUTH EMERGENCY SERVICES & SHELTER  
OF IOWA • \$32,000**

Counseling services for youth and their families that are not involved with the DHS or Juvenile Court systems.

**YOUTH HOMES OF MID-  
AMERICA • \$20,000**

Mental health services for children with severe emotional and behavioral problems.

**MEMBERSHIPS/  
OTHER • \$6,770**

**STATEMENTS OF FINANCIAL POSITION  
JANUARY 1 THROUGH DECEMBER 31, 2005 AND 2004**

<b>ASSETS</b>	<b>2005</b>	<b>2004</b>
Cash/cash equivalents	344,957	288,265
Recoverable federal excise tax	1,704	-
Accrued interest receivable	84,900	98,990
Investments	15,111,925	15,639,684
Furniture/equipment, at cost less accumulated depreciation of \$19,869 (2004; \$18,620)	5,999	7,249
	\$15,549,485	\$16,034,188
<b>LIABILITIES AND NET ASSETS</b>		
Accrued payroll taxes	-	1
Accrued federal excise tax	-	671
		672
Total liabilities		
Net assets - unrestricted	15,549,485	\$16,033,516
<b>EXPENSES</b>		
Program grants	691,410	624,820
Management and general	255,960	243,408
Total expenses	947,370	868,228
Total increase (decrease) in net assets	(484,031)	16,803
Net Assets - beginning of year	16,033,516	16,016,713
Net Assets - end of year	\$15,549,485	\$16,033,516

The Mid-Iowa Health Foundation is a tax-exempt 501 (c) (3) organization and is further classified as a 509 (a) foundation.



## **BOARD MEMBERS**

**IVAN L. JOHNSON**  
Chair

**DON C. GREEN, M.D.**  
Vice Chair

**T. WARD PHILLIPS**  
Secretary/Treasurer

**TEREE CALDWELL-JOHNSON**

**SIMON CASADY**

**NOLDEN GENTRY**

**ROB HAYES**

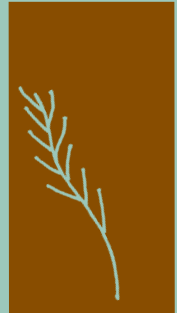
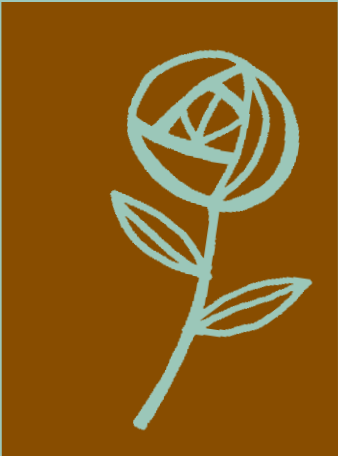
**THOMAS A. JESCHKE, ED.D.**

**JUDITH A. VOGEL, C.FA.**

## **STAFF**

**KATHRYN BRADLEY**  
President

**DENISE SWARTZ**  
Program Officer



**MID-IOWA HEALTH FOUNDATION**  
**550 39TH STREET, SUITE 305**  
**DES MOINES, IA 50312**  
**(515) 277-6411**

**[WWW.MIDIOWAHEALTH.ORG](http://WWW.MIDIOWAHEALTH.ORG)**  
**[INFO@MIDIOWAHEALTH.ORG](mailto:INFO@MIDIOWAHEALTH.ORG)**





**Mid-Iowa Health Foundation**

